

HERMITCRAB® PRO WITH FLOW MONITORING

The ETwater HermitCrab Pro with Flow Monitoring upgrades conventional controllers to ETwater Internet-based technology automated scheduling. In 10 minutes or less, this simple box converts many brands of conventional controllers by plugging into the remote control port of your controller. It's the fastest path to an ETwater smart system upgrade for your existing Rain Bird®, Rain Master®, Superior, Weathermatic®, Irritrol®, Toro® and Hunter® controllers.



HERMITCRAB PRO FEATURES

- Self-adjusting weather-based watering schedules.
- Capacity up to 48 stations.
- Weather-proof, vandal resistant plastic NEMA 4X box and stainless steel hardware for mounting adjacent to existing controller.
- Back lit LCD display for viewing.
- HermitCrab Pro operating status and programming selections.
- Two-way wireless communication for downloading ET-based schedules, reporting irrigation and site data, and sending alerts.
- Standard connection for rain sensor.
- Made in the USA.
- Three (3) year limited warranty on the ETwater HermitCrab Pro equipment.
- 4G network provides faster connections.
- Instant control and station watering from any device via mobile web app.

FLOW ATTACHMENT

- HermitCrab Pro with Flow Monitoring measures and records flow and alerts on flow events such as a main line breaks, stuck valves, and broken sprinkler detection.
- Compatible with most available irrigation flow sensors.
- Diagnostic LEDs report on power and flow sensor pulses.

SAVE MONEY

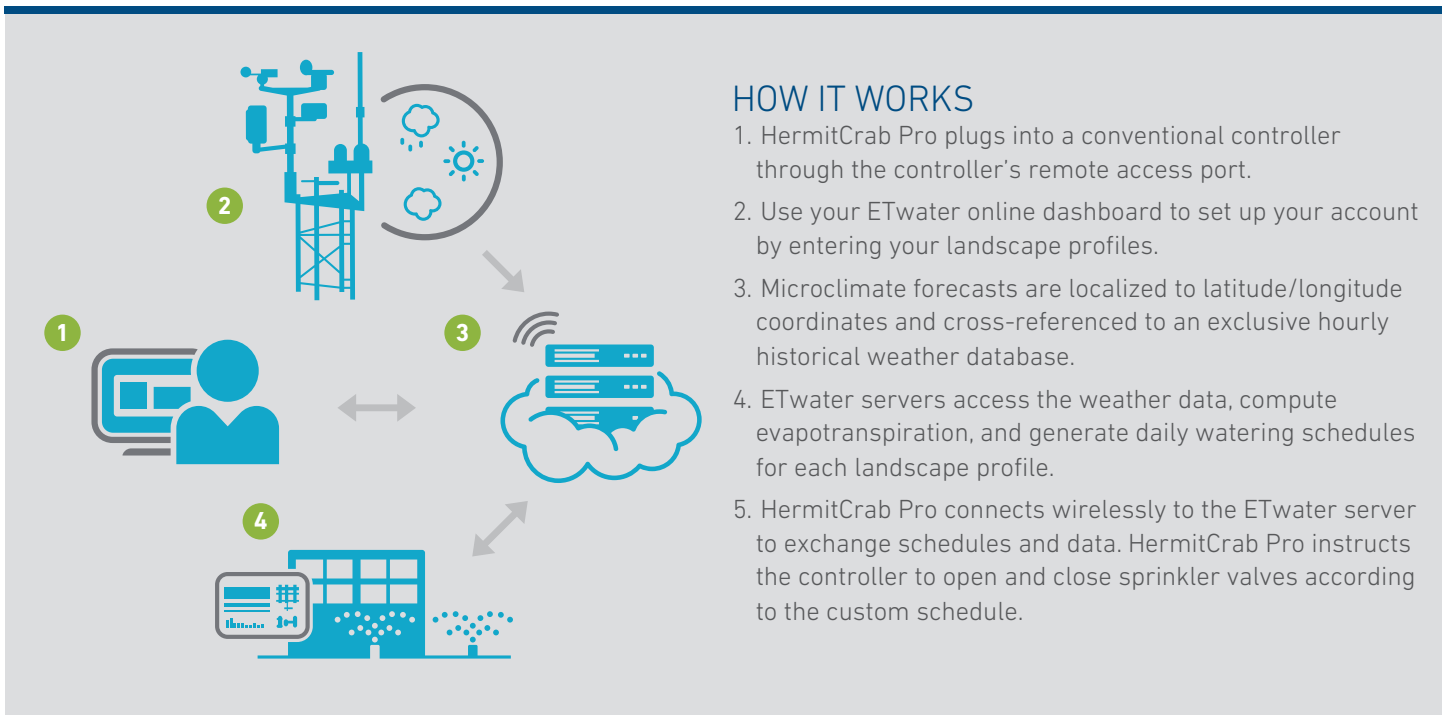
- **Great value:** make your conventional controller “smart” for much less than the cost of a new smart controller.
- **With 20–50% water savings possible,** payback can be just a few months.

FASTEST INSTALLATION EVER

- **“Plug and Play” installation in under 10 minutes.**
- **Compatible with most major controller brands.**

SAVE LABOR

- **Remote monitoring + management** via the web.
- **Single-platform simplicity** allows management of multiple controllers of various brands at multiple sites—all with the ETwater web-based system.
- **Includes the most popular labor-saving features of ETwater online dashboard** including water budgeting and rainfall forecast.
- **Flow Monitoring capability,** with full reporting on learned flow rates per controller and per station.



HOW IT WORKS

1. HermitCrab Pro plugs into a conventional controller through the controller's remote access port.
2. Use your ETwater online dashboard to set up your account by entering your landscape profiles.
3. Microclimate forecasts are localized to latitude/longitude coordinates and cross-referenced to an exclusive hourly historical weather database.
4. ETwater servers access the weather data, compute evapotranspiration, and generate daily watering schedules for each landscape profile.
5. HermitCrab Pro connects wirelessly to the ETwater server to exchange schedules and data. HermitCrab Pro instructs the controller to open and close sprinkler valves according to the custom schedule.

HARDWARE + ELECTRICAL SPECIFICATIONS

- EPA WaterSense approved.
- Dimensions: 7.9"L x 3.9"W x 2.0"D.
- Weight: 2 lb.
- Input voltage 24 VAC provided by host controller.
- In event of power outage, non-volatile memory retains all programming information indefinitely.
- Accepts 3/4" conduit.
- Requires flow sensor.
- For outdoor use, the flow adapter may need to be enclosed in a separate NEMA box.



COMPATIBILITY

The ETwater HermitCrab Pro is compatible with most models of the following brands. Host controller must have a remote control port.

- Hunter®
- Rain Master®
- Irritrol®
- Superior™/Sterling
- Rain Bird®
- Weathermatic®
- Toro®

HOW TO SPECIFY HERMITCRAB PRO WITH FLOW ADAPTER

- ETW-HC-PRO-FA** HermitCrab Pro w/flow adapter
- ETW-HC-PRO** HermitCrab Pro no flow adapter

Plus, one of the following required host cables:

- ETW-HC-H-CO** HermitCrab Pro host cable for Hunter® host controller (uses 3 wire remote connector)
- ETW-HC-T-CO** HermitCrab Pro host cable for Irritrol® or Toro® host controller (uses RJ11 connector)
- ETW-HC-IR6-CO** HermitCrab Pro host cable for Irritrol® or Superior™ host controller (uses 6 pin remote connector)
- ETW-HC-W-CO** HermitCrab Pro host cable for Weathermatic® host controller (uses RJ11 connector)
- ETW-HC-RB5-CO** HermitCrab Pro host cable for Rain Bird® host controller (uses 5 pin remote connector)
- ETW-HC-RB6-CO** HermitCrab Pro host cable for Rain Bird® host controller (uses 5 pin remote connector)
- ETW-HC-RM-CO** HermitCrab Pro with cable for Rain Master® host controller (uses 9 pin D type male remote connector)

DISCLAIMER

ET Water Systems, Inc. is neither affiliated with nor endorsed by Hunter Industries, The Rain Bird Corporation, Rain Master Irrigation Systems, Inc., Storm Manufacturing Group, Telsco Industries, or the Toro Company. The warranties of Hunter Industries, The Rain Bird Corporation, Rain Master Irrigation Systems, Inc., Storm Manufacturing Group, Telsco Industries, and the Toro Company do not apply to ETwater HermitCrab products. Rain Bird and Maxicom are trademarks of Rain Bird Corporation.

© 2024 Husqvarna Group. All Rights Reserved. ETWATER is a registered trademark and HERMITCRABPRO is a trademark of ET Water Systems, Inc. ET Water Systems products and technology are protected by U.S. Pat. Nos. 7596429, 8948921, 9986696, 10028454 and patents pending.